

DW 3000

Model 2018

- More effective and powerful heating element design
- Updated software program for stable performance output
- Smart and user friendly digital Display Information System
- The DW 3000 comes with the ergonomic and stackable PowerCase

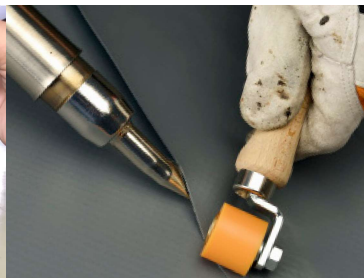
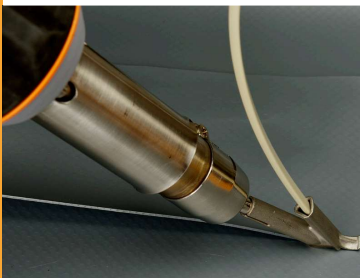


The new 2018 model is developed for a wide range of applications and all types of power supply at your workplace.

Flooring/Plastic Welding

Industry/Automotive

Roofing/Waterproofing



The power, precision and control of the DW 3000 comes from a brushless motor powered by next-gen electronics. The next-gen electronics provide the DW 3000 its unique features and also make it possible to precisely control the power and heat of the tool.

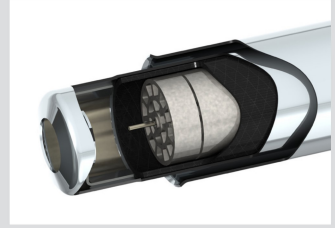
User benefits



30 % less weight and more ergonomic than market standard



50 % more airflow than market standard



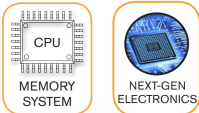
Extremely accurate temperature control



Comes with the new PowerCase



Stack & Lock-system



Technical Data DW 3000 230V - Article no. 293001 - EAN Code: 7314522930015

~	~ 230 V 2000 W		810 g 1.80 lbs		III 370 l/min Pa 4100 II 340 l/min Pa 3600 I 310 l/min Pa 3100
~	50/60 Hz		65 dB		I Ø 48 mm Ø 1.9 inch
	100-600 °C		3 m		330 mm 13.0 inch