

SIEVERT®



293047 ~120 V

DW 3000

Hot Air Tool

US	Operating Instructions	3-6
	Safety Instructions	7-10
F	Mode d'emploi	3-6
	Instructions de sécurité	11-14
ES	Instucciones de uso	3-6
	Instrucciones de seguridad	15-18



US LISTED Conforms to UL Std. 499 14th ed. November 7, 2014

Intertek
5002092

MANUFACTURER'S LIMITED COMMERCIAL WARRANTY

This warranty is specific to the product manual to which it is attached.

Maintenance, Service and Repairs: Before any work on the product: Remove the tool from the power source – Check the power cord and plug for any visible damage. For secure and proper operation, keep the product and the ventilation slots clean at all times. Use only original Sievert accessories. If the tool does not work after following the trouble shooting guide, then the product should be taken to an authorized Sievert Service Center.

Warranty and Term: The Sievert Hot Air Tool 293047 has been manufactured without defect in materials and/or workmanship. The warranty period is 12 months, commencing on the date of sale to the purchaser. This warranty is not transferable.

Warranty Administration: Upon completion of your purchase, we request that the Purchaser register the Serial Number/s of the product with Sievert. Claims under this warranty will be accepted only if the complete and properly packaged product is delivered or shipped by the purchaser to an authorized Sievert Service Center complete with proof of purchase/sales receipt or invoice.

Subject to the time and coverage limitations set forth herein, as the exclusive remedy, through your authorized Sievert dealer Sievert will replace or repair any product and/or part or parts without charge.

What is Not Covered By this Warranty? Sievert does not warrant (a) damage to wearing parts, including the heating element and power cord; (b) damage caused by improper use or use of the product for purposes other than those for which it was designed; (c) damage caused by accident or disasters such as fire, flood, wind and lightning, humidity and/or rain; (d) damage caused by unauthorized attachments, modifications, alterations, improper servicing or maintenance, improper storage; or (e) any neglect, other abuse or misuse of the product.

Exclusive Warranty: The foregoing warranty is exclusive and in lieu of all other warranties or remedies, whether written, oral or implied. Any and all implied warranties of merchantability, fitness for particular purpose, course of dealing or usage of trade are hereby expressly disclaimed and excluded.

Limitation of Remedies: Under no circumstances, except to the extent such exclusions are prohibited by applicable law, shall Sievert be liable for any loss or damage, direct or indirect, special, incidental or consequential arising out of the use of or inability to use the product including but not limited to any claim for loss of profits, loss of profits, loss of savings or revenue, loss of use of the equipment or any associated equipment, facilities or continued service, downtime, the claims of costs of third parties including customers and injury to property. Some states do not allow limitations on how long an implied warranty lasts of the exclusion or limitation of incidental or consequential damages, so the above limitations or exclusion may not apply to you. This warranty gives you specific legal rights, and you may also have other rights that vary from state to state.

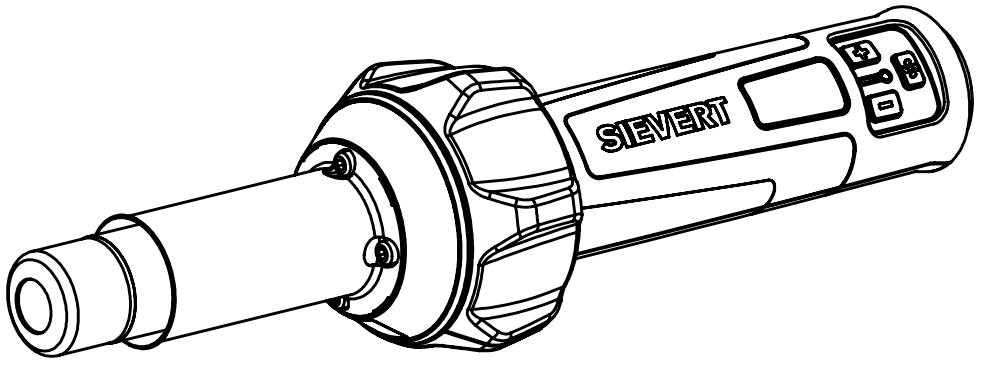
Future Changes: Sievert reserves the right to reserve, change or modify the construction and design of its products or any component part or parts thereof without incurring the obligations to make such changes or modifications to the product.








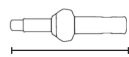
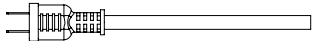



How to Obtain Service: Contact the authorized Sievert dealer at the point of original purchase to obtain service or replacement parts.

Products purchased outside the USA and Canada are not covered by this warranty

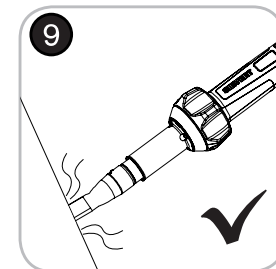
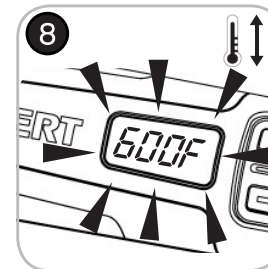
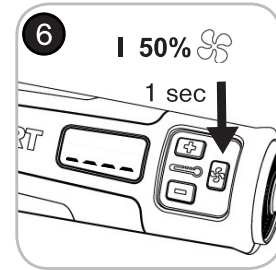
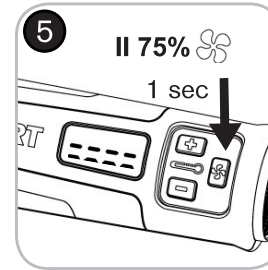
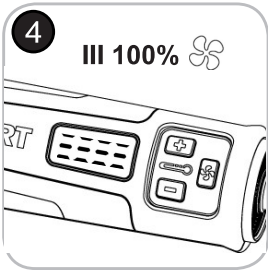
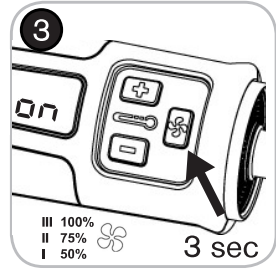
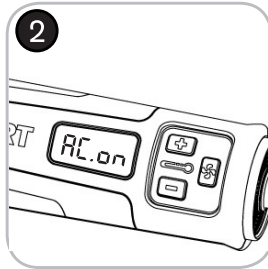
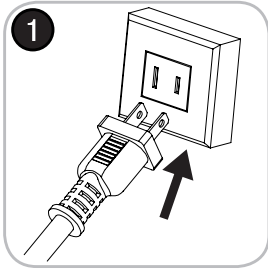
SIEVERT®

DW 3000

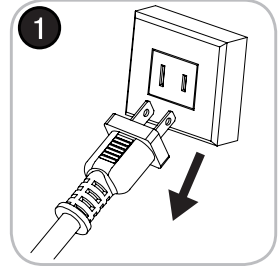
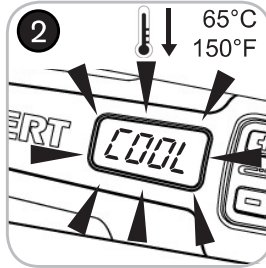
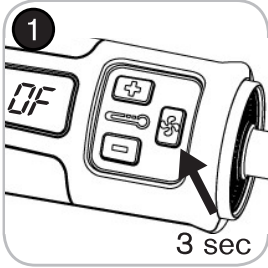


Technical Data / Données techniques / Datos técnicos										
 <p>~ 120 V 1700 W 293047</p>	 <p>~ 120 V 293047</p> <table border="0"> <tr> <td>III</td> <td>12.7 cfm</td> <td>Pa 4000</td> </tr> <tr> <td>II</td> <td>11.7 cfm</td> <td>Pa 3500</td> </tr> <tr> <td>I</td> <td>10.6 cfm</td> <td>Pa 3000</td> </tr> </table>	III	12.7 cfm	Pa 4000	II	11.7 cfm	Pa 3500	I	10.6 cfm	Pa 3000
III	12.7 cfm	Pa 4000								
II	11.7 cfm	Pa 3500								
I	10.6 cfm	Pa 3000								
 <p>50/60 Hz</p>	 <p>65 dB</p>									
 <p>220-1110 °F</p>	 <p>Ø 1.9 inch</p>									
 <p>1.80 lbs</p>	 <p>13 inch</p>									
 <p>6 ft</p>	 <p>UL LISTED Conforms to UL Std. 499 14th ed. November 7, 2014</p>  <p>Intertek 5002092</p> 									

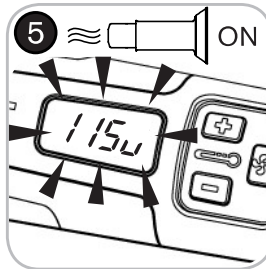
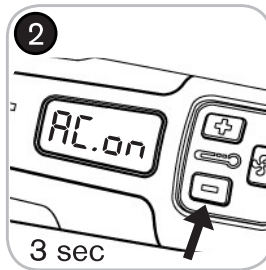
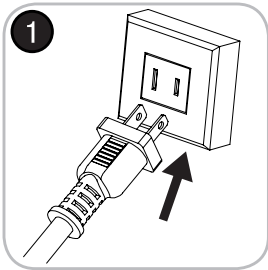
Switching on / Mise en service / Puesta en marcha



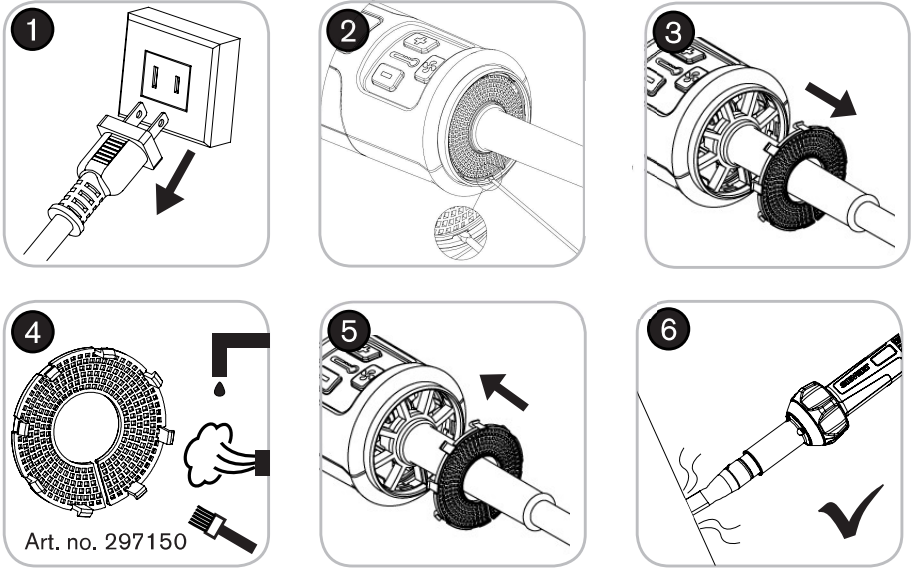
Switching Off / Désactiver / Desconexión



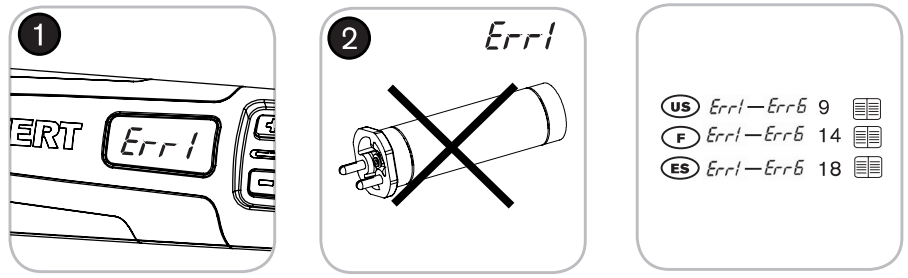
Volt Meter / Voltmètres / Medidores de Volt



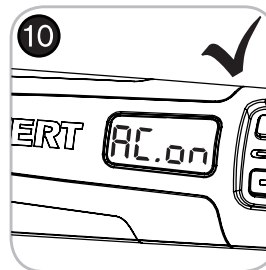
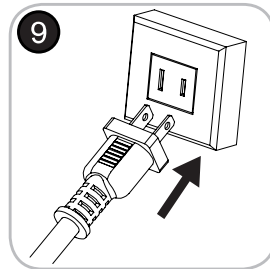
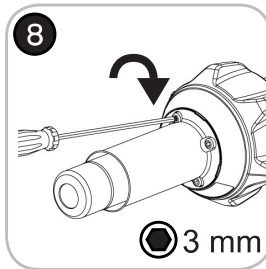
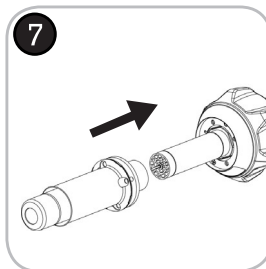
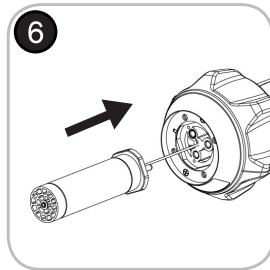
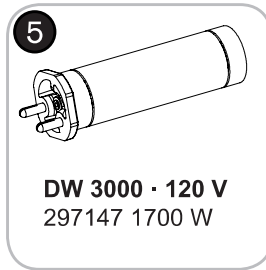
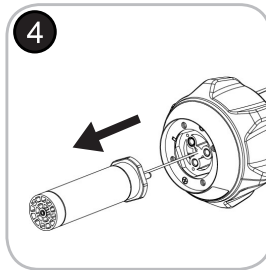
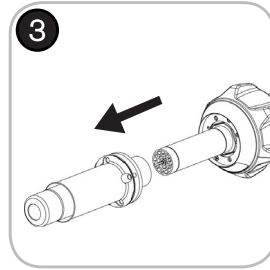
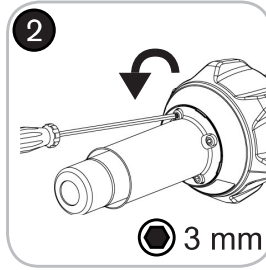
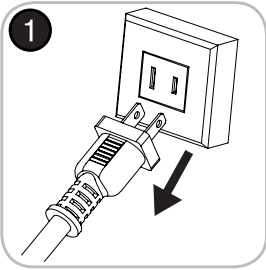
Clean air intake / Nettoyer les ouvertures pour l'air / Limpie la entrada de aire




Error message / Message d'erreur / Avisos de fallo





Replacing the heating element / Remplacement de l'élément chauffant / Cambio de la resistencia eléctrica




Read the operating instructions carefully before using the tool and always observe the safety rules.


 **Warning**
Non-observance of the safety rules while working with the hot air tool may cause fire, explosion, electric shock or burns. Avoid working in rain or moist/damp conditions as this may cause electric shock. Exercise care when using the tool in the proximity of combustible materials. Do not direct the tool at the same place for a prolonged period. Do not use the tool in an explosive atmosphere. Heat may be conducted to combustible materials that are out of sight. Do not leave the tool unattended when in operation.


 **Personal Protection against electric shock**
Avoid touching earthed equipment, such as piping, radiators, cookers and refrigerators. An incorrectly connected mains lead could cause possible electric shock. A damaged casing or an opened unit could cause electric shock if still plugged in.


 **Store the tool in a safe place**
After use place the tool on its knock guard and allow it to cool before storing back in the case. When not in use, store the tool in a dry locked room out of the reach of children.

 **Beware of toxic gases and ignition hazards**
Toxic gases may occur when working on plastics, paints varnishes or similar materials. Avoid breathing in vapours, even when they appear to be harmless. Be aware of fire and ignition hazards.

 **Caution power cord**
A damaged power cord can lead to an electric shock. - Do not carry the tool by the power cord and do not use the power cord to pull the plug from the outlet. - Protect the power cord from heat, oil and sharp edges. If the supply cord is damaged, it must be replaced by the manufacturer, its service agent or similarly qualified persons in order to avoid a hazard.

 **Caution**
For your own safety, only use the accessories and attachments that are shown in the operating instructions or recommended or specified by the manufacturer. Using attachments or accessories other than those recommended in the operating instructions or catalogue may result in personal injury.

 This tool should not be used by children or others who lack the appropriate knowledge or training.

 **Repairs**
This hot air tool complies with the relevant safety regulations. Repairs should only be performed by a qualified electrician. Failure to observe the operating instructions may result in injury or damage to you or your place of work. Failure to observe the operating instructions may turn the tool into a source of danger. Keep these safety warnings in a safe place



WARNING: Extreme care should be taken when stripping paint. The peelings, residue and vapors of paint may contain lead, which is poisonous. Any pre-1977 paint may contain lead and paint applied to homes prior to 1950 is likely to contain lead. Once deposited on surfaces, hand to mouth contact can result in the ingestion of lead. Exposure to even low levels of lead can cause irreversible brain and nervous system damage; young and unborn children are particularly vulnerable. Before beginning any paint removal process you should determine whether the paint you are removing contains lead. This can be done by your local health department or by a professional who uses a paint analyzer to check the lead content of the paint to be removed. **LEAD-BASED PAINT SHOULD ONLY BE REMOVED BY A PROFESSIONAL AND SHOULD NOT BE REMOVED USING A HEAT GUN.**

Persons removing paint should follow these guidelines:

- 1) Move the work piece outdoors. If this is not possible, keep the work area well ventilated. Open the windows and put an exhaust fan in one of them. Be sure the fan is moving the air from inside to outside.
- 2) Remove or cover any carpets, rugs, furniture, clothing, cooking utensils and air ducts.
- 3) Place drop cloths in the work area to catch any paint chips or peelings. Wear protective clothing such as extra work shirts, overalls and hats.
- 4) Work in one room at a time. Furnishings should be removed or placed in the center of the room and covered. Work areas should be sealed off from the rest of the dwelling by sealing doorways with drop cloths.
- 5) Children, pregnant or potentially pregnant women and nursing mothers should not be present in the work area until the work is done and all clean up is complete.
- 6) Wear a dust respirator mask or a dual filter (dust and fume) respirator mask which has been approved by the Occupational Safety and Health Administration (OSHA), the National Institute of Safety and Health (NIOSH), or the United States Bureau of Mines. These masks and replaceable filters are readily available at major hardware stores. Be sure the mask fits. Beards and facial hair may keep masks from sealing properly. Change filters often. **DISPOSABLE PAPER MASKS ARE NOT ADEQUATE.**
- 7) Use caution when operating the heat gun. Keep the heat gun moving as excessive heat will generate fumes which can be inhaled by the operator.
- 8) Keep food and drink out of the work area. Wash hands, arms and face and rinse mouth before eating or drinking. Do not smoke or chew gum or tobacco in the work area.

9) Clean up all removed paint and dust by wet mopping the floors. Use a wet cloth to clean all walls, sills and any other surface where paint or dust is clinging. **DO NOT SWEEP, DRY DUST OR VACUUM.** Use a high phosphate detergent or trisodium phosphate (TSP) to wash and mop areas.

10) At the end of each work session put the paint chips and debris in a double plastic bag, close it with tape or twist ties and dispose of properly.

11) Remove protective clothing and work shoes in the work area to avoid carrying dust into the rest of the dwelling. Wash work clothes separately. Wipe shoes off with a wet rag that is then washed with the work clothes. Wash hair and body thoroughly with soap and water.



Maintenance, Service and Repairs

Before any work on the unit: Remove the tool from the power source - Check the power cord and plug for any visible damage. - For secure and proper operation, keep the unit and the ventilation slots clean at all time. - Use only original Sievert accessories. If the tool does not work after following the trouble shooting guide then unit should be taken to an authorized Sievert Dealer.

Trouble shooting

First action in case of error message.

Unplug the tool and wait until the display turns off, reconnect the tool and test it again, if the error code persists or the error occurs again during operation see the troubleshooting list below.

Error Code	Cause	Correction
Err1	Defective heating element	Change heating element, see page 6
Err2	Defective fan	Contact Sievert Dealer
Err3	Unit overheated	Turn of the tool for 3 min and clean air intake
Err4	Low incoming voltage under 90 V	Check power supply, push minus button in AC.on mode to see incoming voltage
Err5	High incoming voltage over 130 V	Check power supply, push minus button in AC.on mode to see incoming voltage
Err6	Temperature sensor failure	Contact Sievert Dealer



Disposal

Do not dispose this power tool into household waste!

Power tools that are no longer suitable for use must be sent for recovery in an environment-friendly manner in according to national law.

ETL Declaration

This product is tested and complies with the requirements of the following standards.

Conforms to UL Std. 499 14th ed. November 7, 2014

FCC 47 CFR Part 15 (2014): Radio frequency device,
Subpart B: Unintentional radiators. Class B equipment

ICES-003 Issue 5: Information Technology Equipment (ITE) –
Limits and methods of measurement, Class B

Stockholm, July 2015

Katrin Lambing
Quality Manager Sievert

Mathias Karlsson
R&D Department Sievert

